

# The 2<sup>nd</sup> European Breeding Bird Atlas in Moldova

Implementation of the MAVA small grants

EBBA2/MAVA evaluation workshop

Ajder Vitalie,

Society for Birds and Nature Protection  
Republic of Moldova



3-7 December 2017

Tomislavov Dom,  
Zagreb, Croatia





- **33.846 km<sup>2</sup>**
- **a predominantly agrarian country**
- **diverse habitats and seminatural**
- **landlocked**



- **Few ornithologists and extremely few young specialists**
- **Poor development of ornithological researches**
- **Few scientific papers published in international magazines**
- **Almost no social/public interest for birds (and hence no citizen science contribution)**



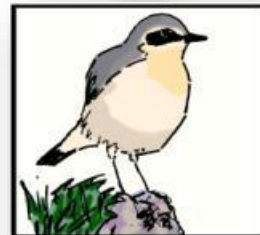
➔ Aquatic/ semi-aquatic and raptor species



„Monitoring Important Bird Areas in Moldova to Improve Conservation Management”

2013-2014

➔ Common birds (farmland species)



Common Birds Monitoring Programme

2014

➔ *Falco cherrug*  
(+ sporadic observations)



„The ecology of the Saker Flacon”

2015

➔ 3 shrike species



THE ECOLOGY OF SHRIKE SPECIES (AVES: LANIUS) FROM REPUBLIC OF MOLDOVA

2013-2017



# INTRODUCTION



**Budget Value:**  
**2016 - 11 700 €**



## Moldova – a land where the past harmoniously mingles with the present



Moldavian landscape (photo by Larisa Bogdica)

Located off the Eastern border of the European Union, in the Black Sea region, where the largest river in Europe, the Danube, flows into the Black Sea. Although it occupies a small area, Moldova has a great diversity of habitats. This is particularly due to the geomorphology of its land, having a great diversity of landscapes, natural and cultural heritage, geological monuments of European and international value. Its location, climate and the landscape have significantly influenced the composition of the flora and fauna. Moldavian ecosystems are rich in plant species and about 17 000 animal species, with over 1000 recorded.

The interview on the contributing to the European Breeding Bird Atlas 2 progress on bird mapping in Moldova was provided by Larisa Bogdica, Andrei Ajder and Silvia Ursul, Moldavian atlas team.

Q1. As a start, maybe you can describe to us a bit more how Moldova looks like?

R: Moldova, although a small country, is very diverse with its landscape. One can admire beautiful wavy hills, springs, rivers, lakes (there are many), forests, rocks, and canyons. There is one national park (Orhei), natural reserves, 86 geologic and paleontological monuments, caves in Europe) and 3 Ramsar sites (wetlands of international importance).

Q2. What areas would be most interesting for birdwatching?

R: There is a rich diversity of areas and places where a birdwatcher can find birds in their natural habitat. One can see (and hear) a lot of songbirds in the „King’s forest” (the oldest floodplain forest in Moldova) or in the „Codrii” (remnants of the medieval huge woods). Also, the two rivers (Prut and Nistru) create nice wetlands in the south of the country flowing into the Danube river (the Ramsar site „Lower Prut Lake” and the Ramsar site „Lower Nistru”). In addition to this, there are



## The training workshop in Moldova: the start of a promising Atlas season



Participants of the workshop (photo by Nadejda Grou)

During the EBBA2 training in Moldova, the participants had a chance to discuss the methodology for EBBA2 and later conduct line-transects and used atlas codes in the field. The number of participants in the country is rather small, but their enthusiasm and field skills will be an important contribution to provide data from Moldova to the European Breeding Bird Atlas 2.

April was a busy month for EBBA2 workshops! Thanks to the financial support from [MAVA foundation](#), training workshops were organized in Azerbaijan, Belarus, Bosnia and Herzegovina, and also Moldova. The **workshop in Moldova** was a great opportunity for explaining and discussing methods for EBBA2, but also for the field training and, finally, to motivate all contributors for such a big project!

The training was organized by the [Moldova Society for Birds and Nature Protection](#), established in early March of this year, by a group of enthusiastic



# INTRODUCTION



**Budget Value:**  
**2017 – 8 000€**



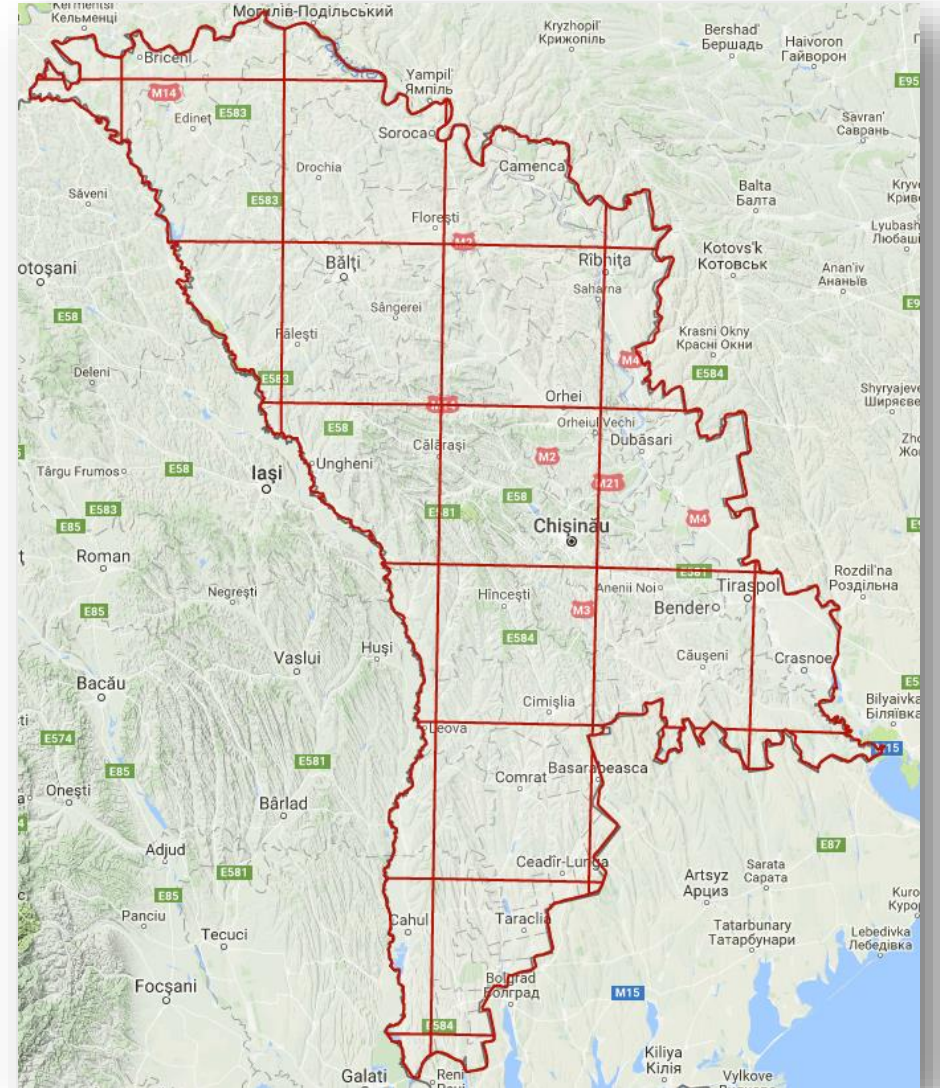
# OBJECTIVES

## 2016:

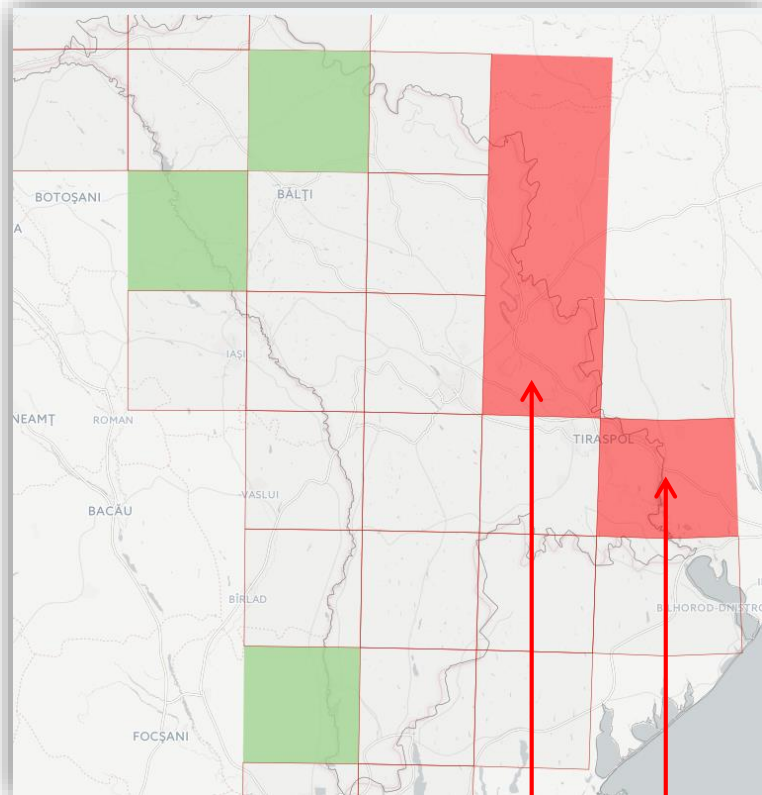
1. Provide data on all breeding bird species in the country from 14 squares (50x50 km);
2. Provide data on nesting of raptors species from 4 squares (50x50 km);
3. Provide data on nesting of nocturnal species from 4 squares (50x50 km).

## 2017:

1. Provide data on all breeding species from 50 squares (10x10 km) using standardized approach;
2. Provide data on crepuscular species from 11 squares (50x50 km);
3. Provide data on breeding woodpecker species from 11 squares (50x50 km);
4. Provide data on breeding colonial species from 11 squares (50x50 km);
5. Provide data on owls breeding species from 11 squares (50x50 km).







Transnistria – a region where foreign visits are not recommended since there is a frozen conflict between Moldova and Russia. The separatist administration forbids any documentary visit unless accompanied by a special permit.

**Findings Moldova on the map**  
With the help of birds

**EBA**  
European Bird Breeding Atlas

**Come to Moldova!**

We believe Moldova offers to any foreign birdwatcher the possibility to discover new places and new data. Moreover, any external contribution will be part of the ornithological history here in Moldova, and foreign input is extremely valuable for us.

Thus, do not hesitate to contact us in case you want to plan your vacation in this country. We are always happy to have guests who love birds as much as we do.

A white stork (*Ciconia ciconia*) hitch-hiking on its way to Moldova. © Ion Gros

## Căutăm voluntari care să se uite după păsări!

Ursul Silvia · 2 mai 2017 · Anunțuri, News, Proiecte · No Comments



Societatea Pentru Protecția Păsărilor și a Naturii are nevoie de ajutorul celor care știu păsări.

În perioada 10 mai – 15 iunie vom face observații pentru a documenta prezența și cuibărirea speciilor comune de păsări în cadrul proiectului [EBBA2 în continuare: a doua contribuție din partea Moldovei](#), care face parte din proiectul pan-european [A New European Breeding Bird Atlas – EBBA2](#). Acest atlas are ca obiectiv documentarea schimbărilor apărute în distribuția speciilor de păsări cuibăritoare pe întregul continent european, inclusiv Republica Moldova.

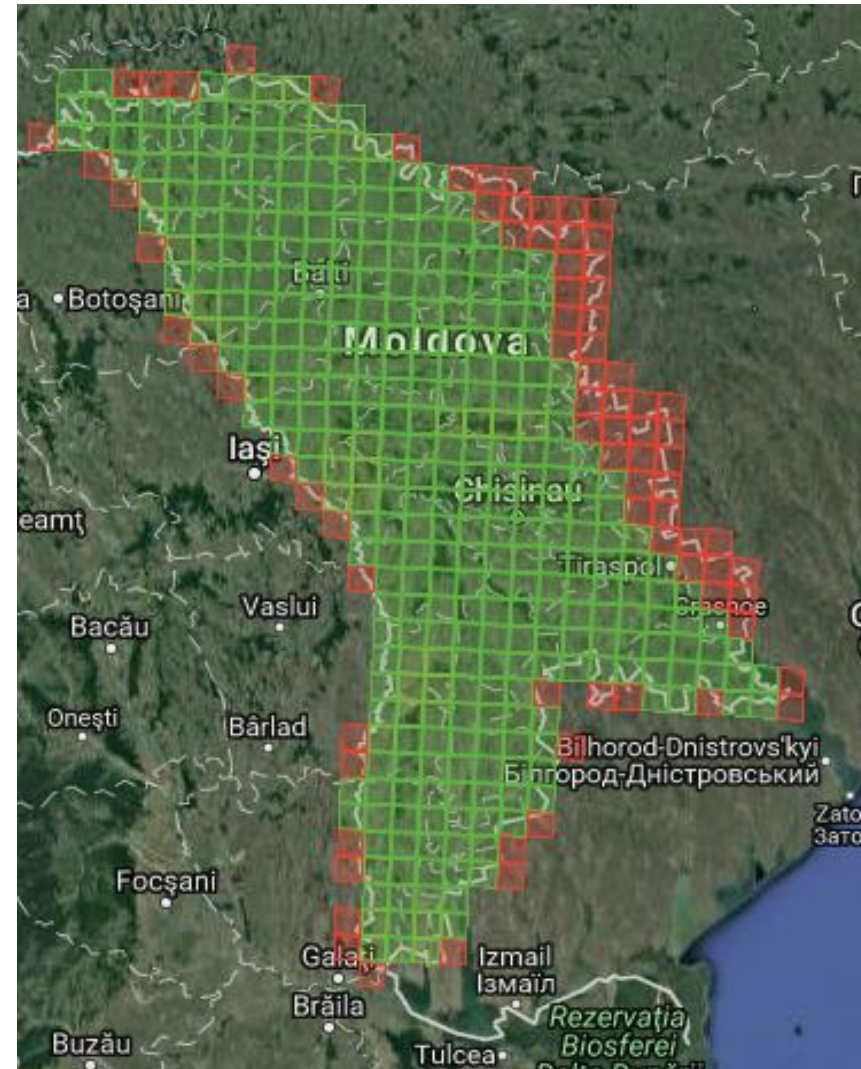
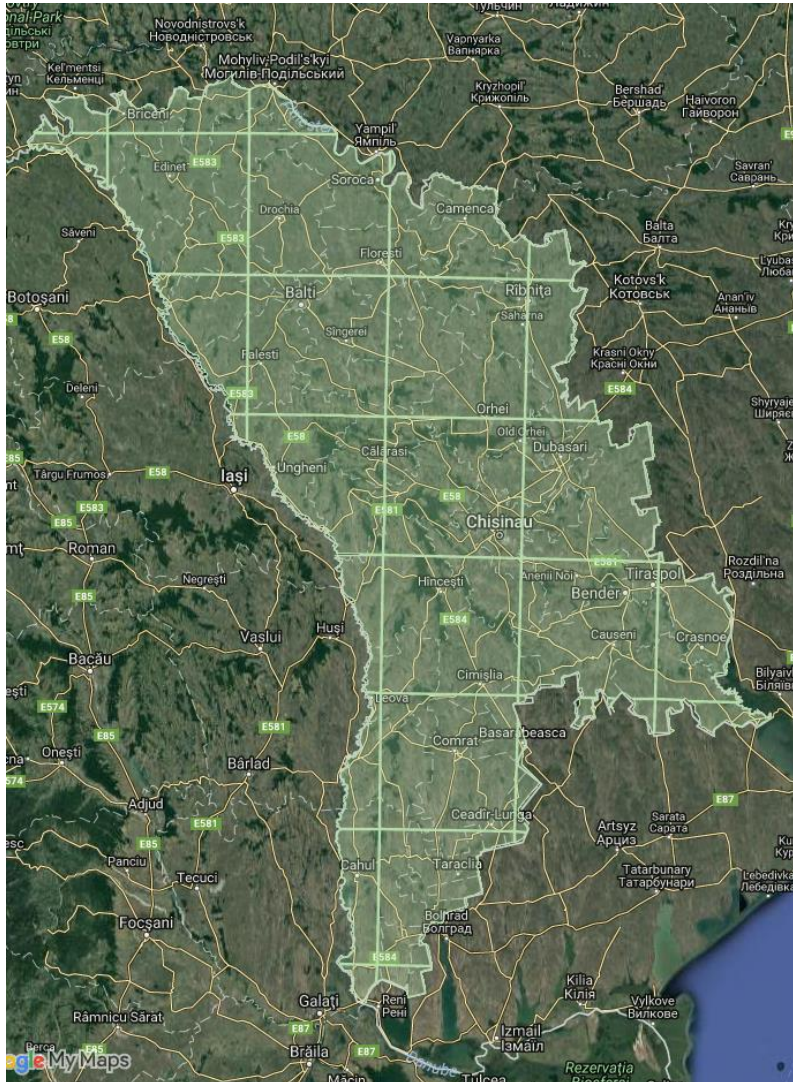
### Cum ne puteți ajuta?

- Efectuați observații oriunde vă aflați sau călătoriți în țară în perioada 10 mai – 15 iunie. Fie că vă deplasați cu mașina dintr-o zonă în alta, vă plimbați în aer liber, vizitați rudele și prietenii de la țară, mergeți în excursii sau la pescuit, fiți atenți la păsările din preajma voastră.
- Notați speciile pe care le puteți identifica și înregistrați comportamentul lor de cuibărire cu ajutorul [codurilor de cuibărire](#). Aceste coduri demonstrează dacă o specie cuibărește sau nu într-un anumit loc. Cel mai slab cod de cuibărire este A1 (*individ prezent într-un habitat potrivit cuibăritului*), iar cel mai puternic este C16 (*cuiburi unde au fost văzuți/auziți pui*). În funcție de comportamentul pe care îl are pasărea observată îi puteți atribui un cod corespunzător (are material de cuib în cioc, se află în paradă nupțială, stă pe cuib, etc).
- Trimiteti observațiile voastre, împreună cu locația unde le-ați făcut, pe adresa [sppn.moldova@gmail.com](mailto:sppn.moldova@gmail.com) sau pe pagina noastră de facebook. Aceste date vor fi alăturate celor oferite de ornitologii profesioniști și vor fi trimise echipei coordonatoare europene, care le va modela în [hărți de distribuție a avifaunei](#) din întreaga Europă.

Orice informație este valoroasă, pentru că va contribui la o mai bună acoperire a Republicii Moldova din punct de vedere avifaunistic și va determina o mai bună reprezentare a țării pe plan european. Din urmare, sunt bine venite date din orice colț al țării referitor la orice specie de



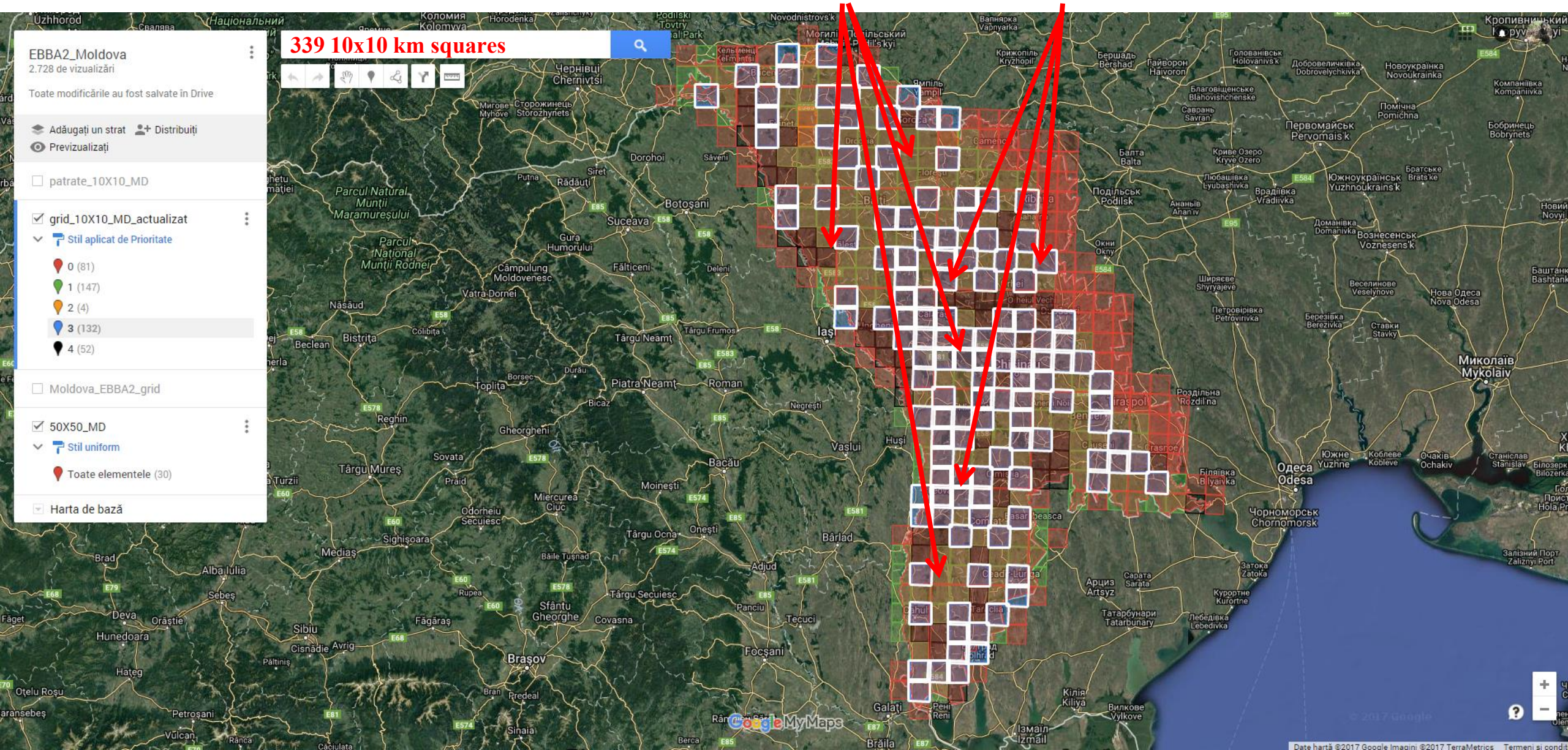
# Analysis of 14 squares of 50 × 50 km and recording nesting bird species





# Analysis of 14 squares of 50 × 50 km and recording nesting bird species

188 squares covered in two years





Juvenile of *Asio flameus*  
2016

*Bubo bubo* nest  
2017









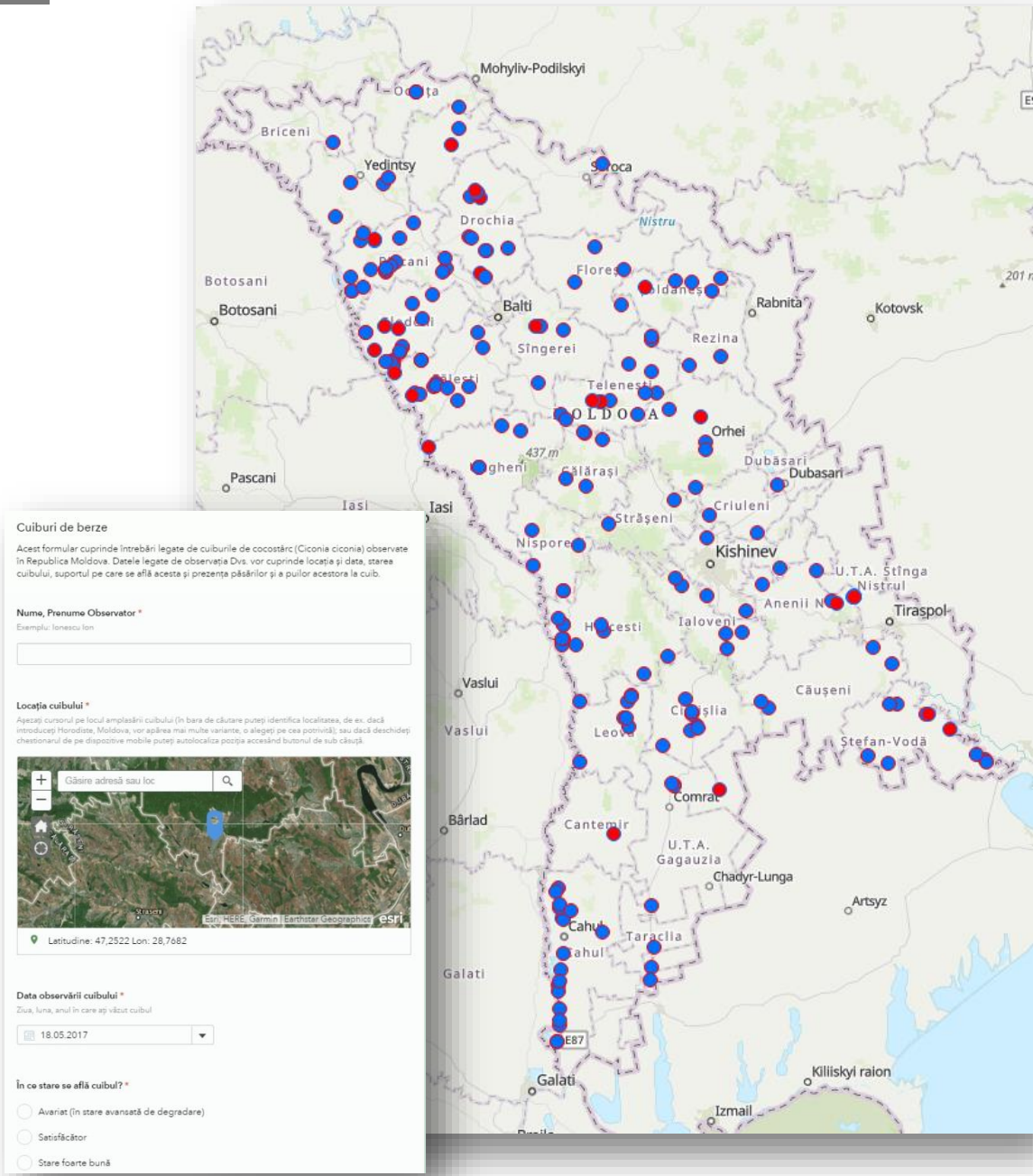
# Citizen science attempt



**2 months**

**90 volunteers**

**270 nests**













## Searching for Bubo bubo





























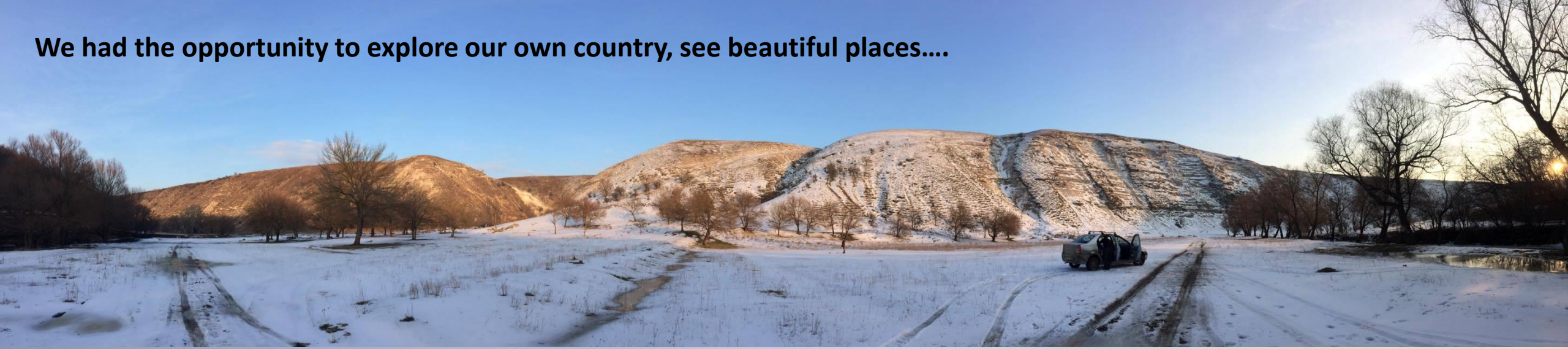








**We had the opportunity to explore our own country, see beautiful places....**

















**Conduct research in diverse habitats and spending A LOT of time out-doors....**





**Our small and unexperienced team tried to just stay on the road..**





And we think we are on the right way...  
Still a lot of work ahead...



**We want to address MANY THANKS to:**

**MAVA FOUNDATION**

**EBBA2 coordination team**

**Foreign birdwatchers:**

*Peter Mikula, Martin Těšický, Radek Lučan*

*Panu Kunttu*

*Tomáš Bělka, Vlasta Škorpíková , Pavel Štěpánek*

**And our own small international team:**

*Florian Klingel*

*Jonathan Hecke*

*Laurentiu Petrencu*

*Emanuel Ștefan-Baltag*

*Viorel Pocora*

*Ion Grosu*

*Sergiu Pruteanu*

*Andrei Lazarchevici*

*Silvia Ursul*

*Vitalie Ajder*





**THANK YOU FOR YOUR ATTENTION!**

