



# EBBA2

Danae Portolou  
Hellenic Ornithological Society

**EBCC**

European Bird Census Council



## Support of the EBBA2 project in Greece



No National or Regional Atlas to date

EBBA1

1st Breeding Bird Atlas was mainly covered by German data



EBBA2

European Breeding Bird Atlas

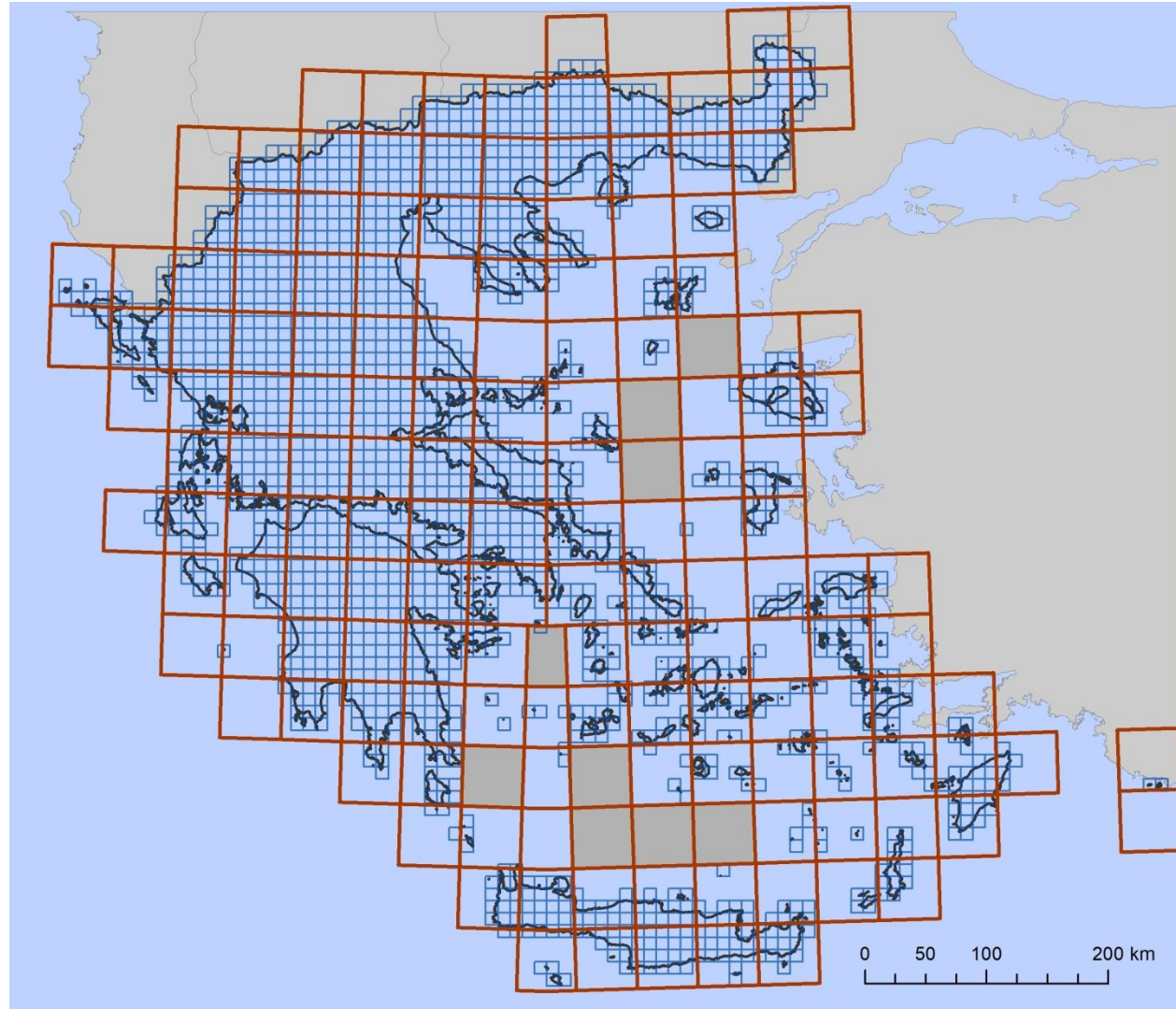
EBCC

European Bird Census Council



# Grids

- National Atlas in 10x10 km square units (**2,068**) in National Greek Grid (EGSA87)
  - Data from 10x10 km transferred to 50x50 km squares in UTM (**163**)
  - Of these 155 have some % of land
  - 60% of which are located in insular areas.



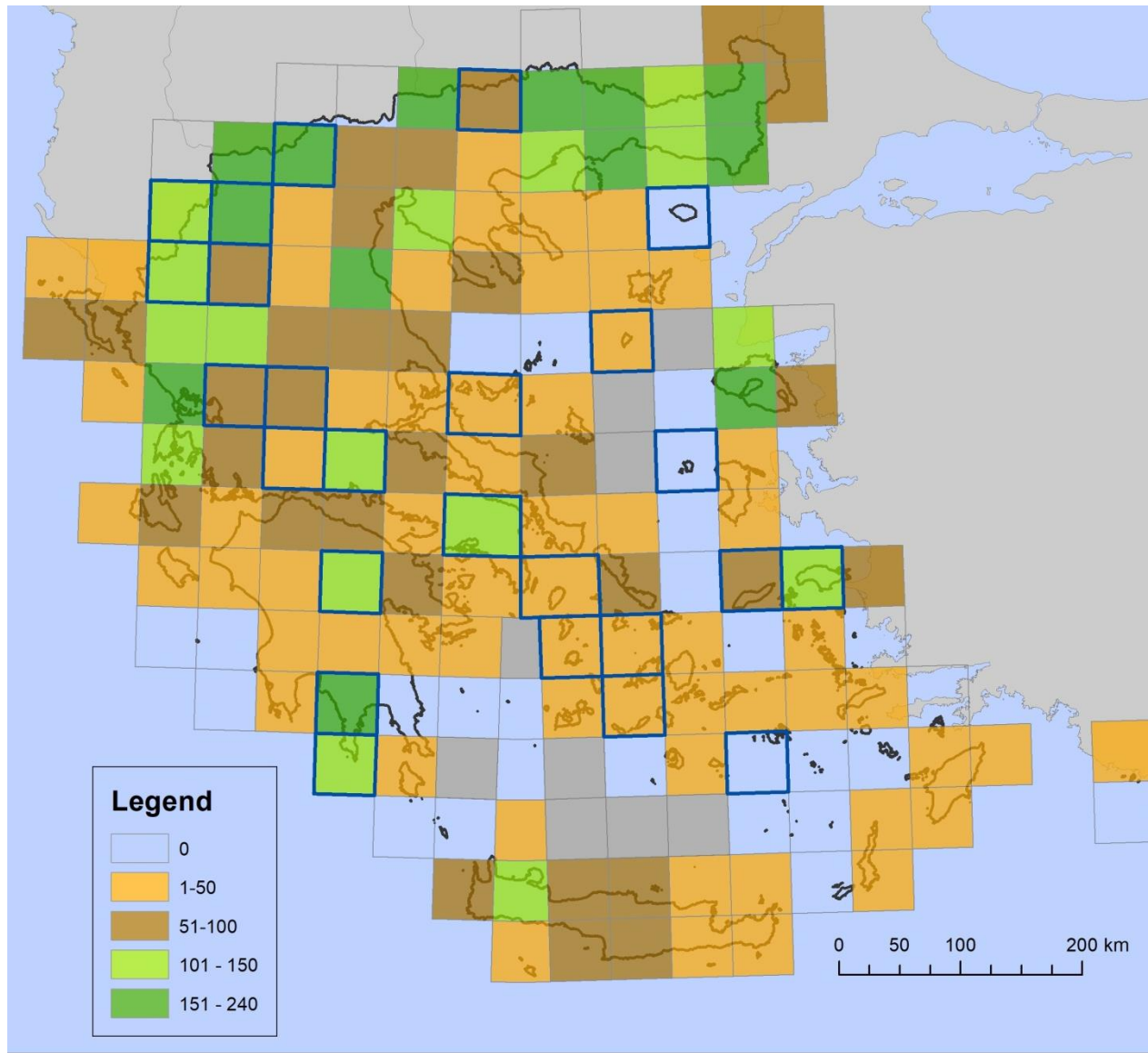
**EBBA2**

European Breeding Bird Atlas

**EBCC**

European Bird Census Council





122 (78%) 50x50km squares

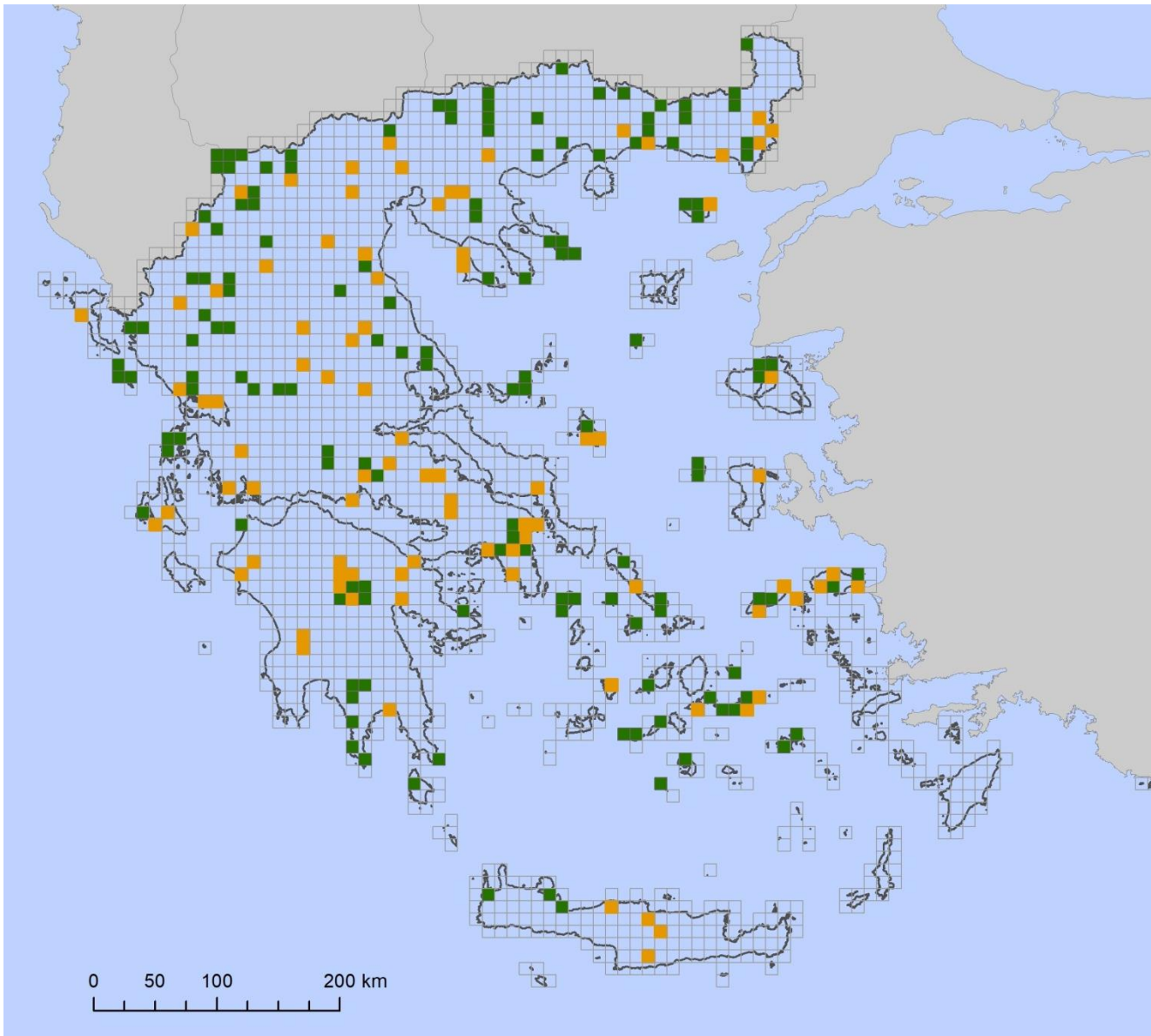
**EBBA2**

European Breeding Bird Atlas

**EBCC**  
European Bird Census Council



# Coverage



## EBBA2

European Breeding Bird Atlas



every bird counts



430 timed squares (2x2km)

80% TV

Covering 90 50x50km

# Data sources



HCBM

Standardized data

Non-standardized data

- ✓ Hellenic Common Bird Monitoring Scheme (HCBM) since 2007 – 2x2 km
- ✓ Timed-effort Visits (TVs) - 2x2 km
- ✓ National Species Censuses (*Falco eleonora*, *Falco naumanni*, pelicans, herons, colonial seabirds, storks etc.)
- ✓ IBA Monitoring (IBA Caretakers)
- ✓ ‘German data’
- ✓ On-line portals
- ✓ Casual Records
- ✓ Projects (LIFE, national PA monitoring)

**EBBA2**

European Breeding Bird Atlas

**EBCC**

European Bird Census Council



Aim: To collect data for the Greek breeding bird atlas and contribute them to the EBBA2

➤ Support provided for 3 years: 2015-2017

1) Support for national co-ordination of the project

- Co-ordination
- Data collation, analysis and reporting
- Promotion of project to increase national and foreign participation
- Participation in workshops & conferences
- Planning and coordination of national volunteer network
- Supported 13 expeditions by foreigner observers

**EBBA2**

European Breeding Bird Atlas

**EBCC**

European Bird Census Council



## 2. Adaptation of the Greek on-line portal to BirdTrack

**BirdTrack**

καταγραφές αυτό το μήνα: 451  
Τελευταία Λίστα: Mike White, 18 spp, 10/11/2015

Καλώς Ηρθατε Danae Portolou  
Εξοδος

Οι επιλογές σας

- Αρχική Σελίδα
- Εισαγωγή Παρατηρήσεων
- Οι παρατηρήσεις μου
- Οι τοποθεσίες μου
- Οι προτιμήσεις μου
- Διαχείριση
- Εισαγωγή ψηφιακών αρχείων
- Βοήθεια
- Επικοινωνήστε μαζί μας

BirdTrack Συνεργάτες

BTO giving nature a home  
rspp

Ορνιθολογική  
ΕΛΛΗΝΙΚΗ ΟΡΝΙΘΟΛΟΓΙΚΗ ΕΤΑΙΡΕΙΑ

Κάντε διπλό κλικ σε μια χώρα για συνοπτικά στατιστικά στοιχεία

BirdTrack φωτογραφίες

Δείτε περισσότερα BirdTrack για flickr  
Προσθέστε τις φωτογραφίες σας εδώ

Tweets Follow

Check for Tweets

**EBBA2**

European Breeding Bird Atlas

**EBCC**

European Bird Census Council





## 3. Training fieldworkers – Atlas Camps – Support travel expenses

- Very positive and most successful action
  - 4 Atlas Camps were carried out, 2 of which in collaboration with ICO (Taygetos, Kastoria, Skyros island & Athens) – 40 participants
  - EBBA2 methodology was demonstrated in various volunteer seminars
- 
- ✓ Enhanced participation of Greek ornithologists & increased capacity
  - ✓ Supported local conservation groups
  - ✓ Covered expenses for surveying remote squares (alpine and islands)
  - ✓ Covered 25 50x50km

**EBBA2**

European Breeding Bird Atlas

**EBCC**

European Bird Census Council



# Taygetos Atlas Camp



*Matou Kalloussi*



*Matou Kalloussi*



Kastoria Atlas Camp

# What increased participation:

- Simplification of the methodology!



**EBBA2**

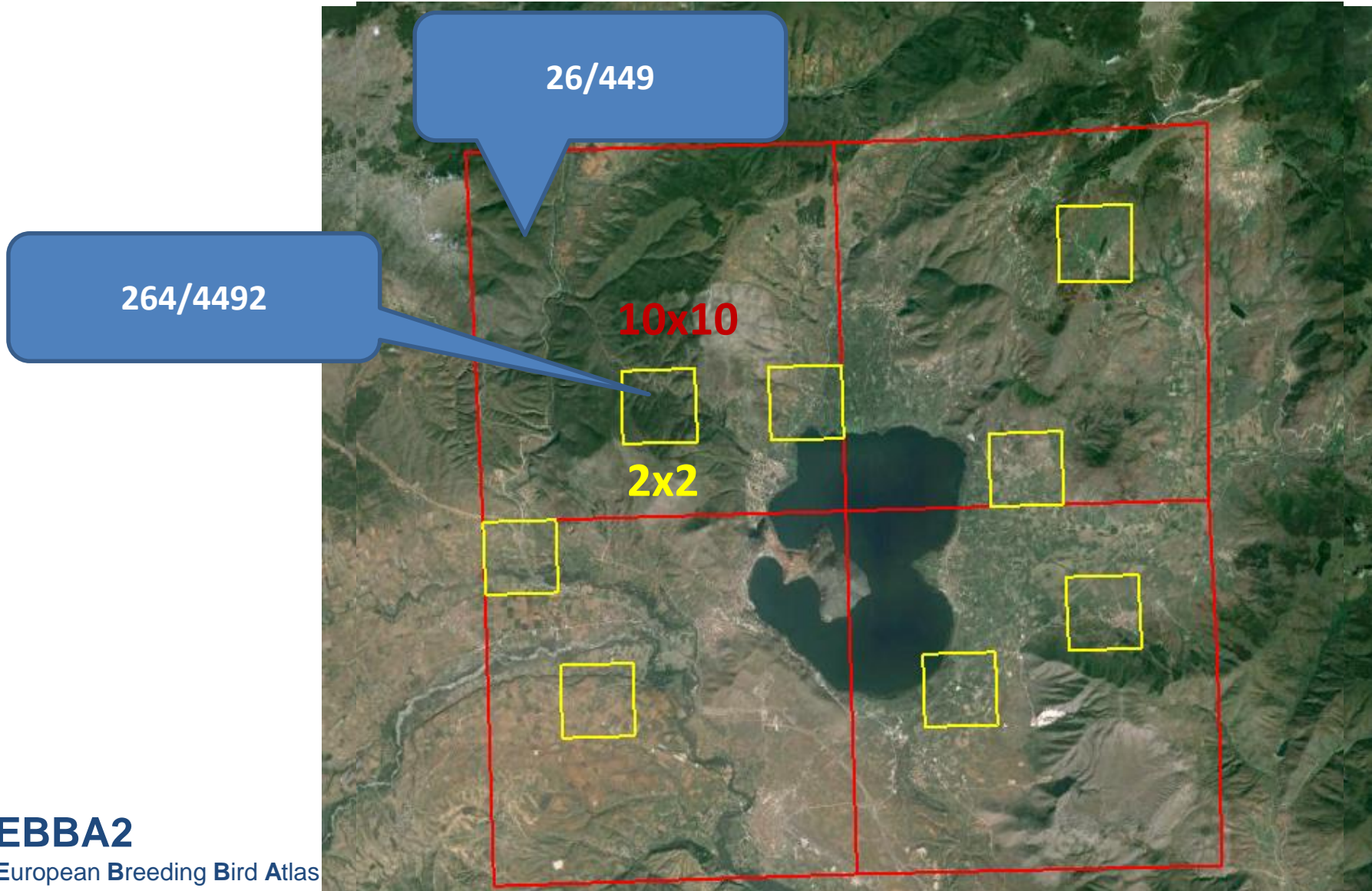
European Breeding Bird Atlas

**EBCC**

European Bird Census Council



# EBBA2 Methodology



**EBBA2**

European Breeding Bird Atlas

**EBCC**

European Bird Census Council



- promotion of Greek Atlas Camps during the ICO bird monitoring meeting in Catalonia (2016)



**EBBA2**  
European Breeding Bird Atlas





# EBBA2

European Breeding Bird Atlas



- Provision of grid coverage on google maps & updating

The image shows a Google Maps interface with a grid overlay on the Balkan region, primarily Greece. The sidebar on the left contains the following information:

- Map Title:** Greek Breeding Bird Atl...
- Description:** European Breeding Bird Atlas 2, Square coverage with standardized methods, Updated: 20/6/2017, 3,856 views.
- Actions:** SHARE, EDIT
- Grid Settings:**
  - 50x50 Coverage
  - 10x10 Coverage Mainland
  - 10x10 Coverage Crete
- Map Style Selections:** 34SCJ3, 34SCK4, 34SDG3, 34SDG4, ... 159 more

The main map area shows a grid of colored squares (green, orange, blue, pink) overlaid on a satellite view of Greece and surrounding countries (Albania, Macedonia, Bulgaria, Kosovo). A yellow notification banner at the top of the map reads: "When you share your map, this is how it will look in view-only mode. [Dismiss](#)".





# Future steps

- Complete data analysis & Expert data checking
- Find funding to continue with National Atlas



**EBBA2**  
European Breeding Bird Atlas

**EBCC**  
European Bird Census Council  
every bird counts

  
Ορνιθολογική  
ΕΛΛΗΝΙΚΗ ΟΡΝΙΘΟΛΟΓΙΚΗ ΕΤΑΙΡΕΙΑ