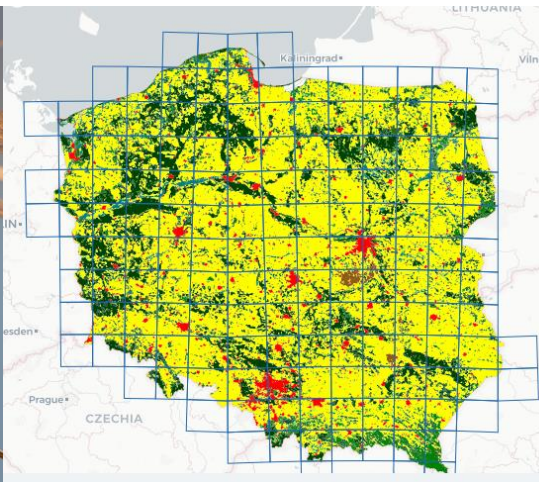


EBBA2 in Poland – achievements and challenges



Tomasz Wilk, Tomasz Chodkiewicz
Polish Society for the Protection of Birds
POLAND

Poland

312 000 km², ca. 160 50x50 squares



Data collection - presence

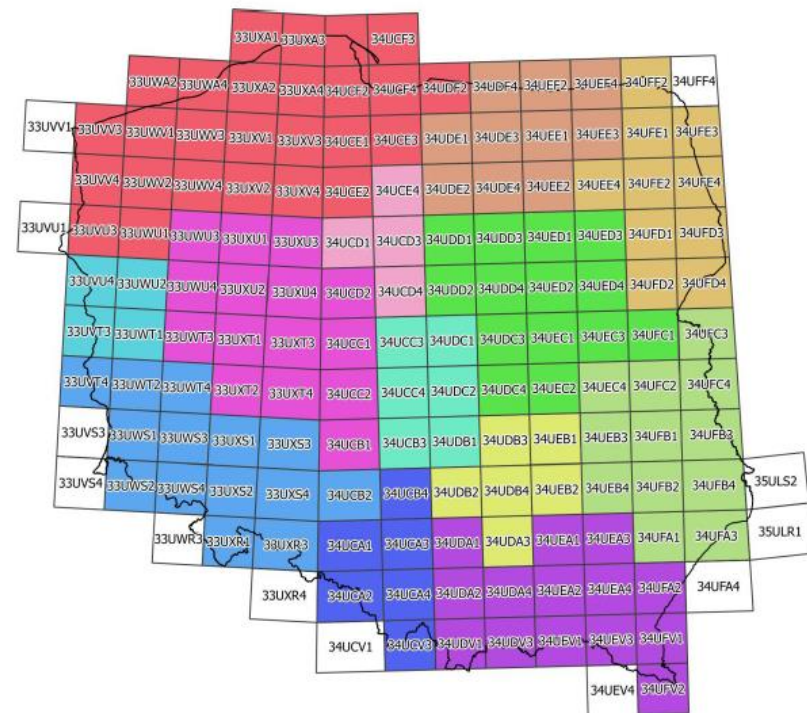
national

- portal ornitho (data from 990 observers)
- National Bird Monitoring Scheme (including Common Breeding Bird Survey)

regional:

- regional coordinators / regional databases

no specific EBBA fieldworks, except for some small scale survey in 2017



Data collection - abundance

common species (ca. 100)

- Common Breeding Bird Survey

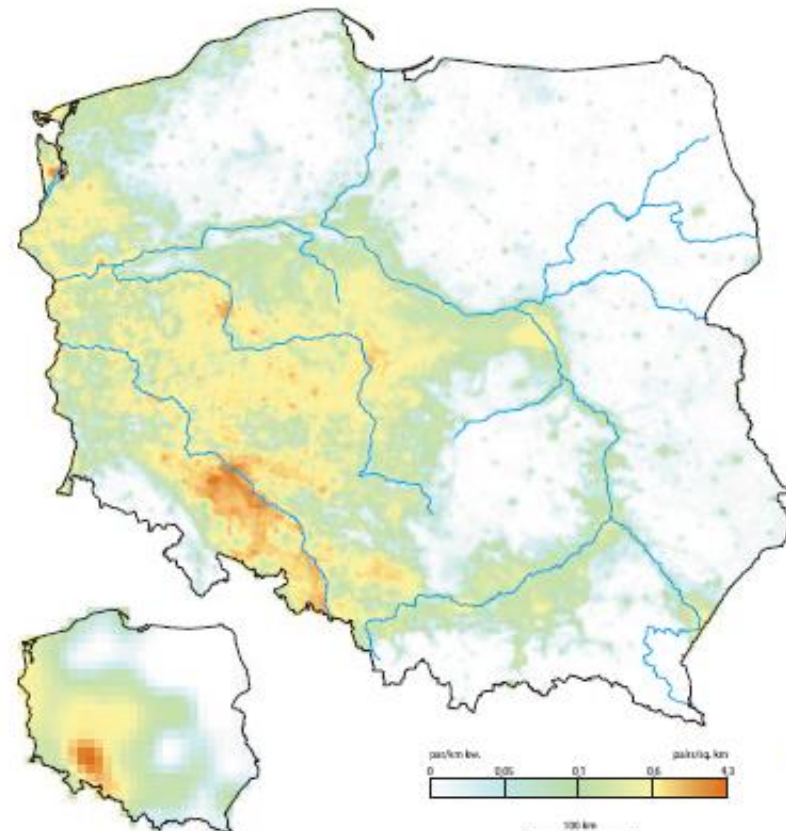
less common, rare, colonial species:

- regional coordinators / regional databases
- verified at a national level

Słownik rdzawy		<i>Luscinia megarhynchos</i> Common Nightingale	
rozprzestrzenienie %	73,1	12,1 - 34,3	
Wielkość populacji	102 000	90 200 - 116 000	
% populacji EU 27	2,6	2,3 - 3,0	
Trend EU %	+3,5	stabilny	
Trend PL %	-22,9	stabilny	
Trend rozprzestrzenienia PL %	-0,3	stabilny	
IUCN Red List	LC	LC	
SPCC, Ankieta I	non-SPEC ¹	-	
Wąrygodność/ mobilność	95,6	42,1	

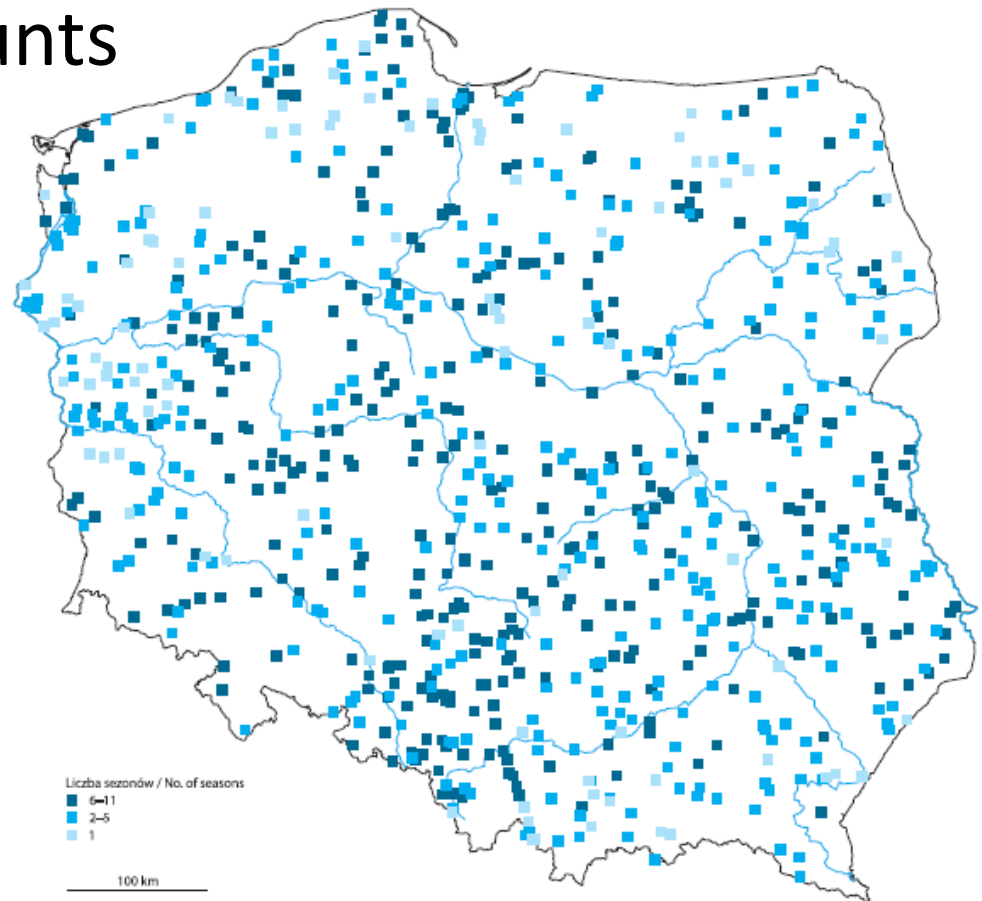
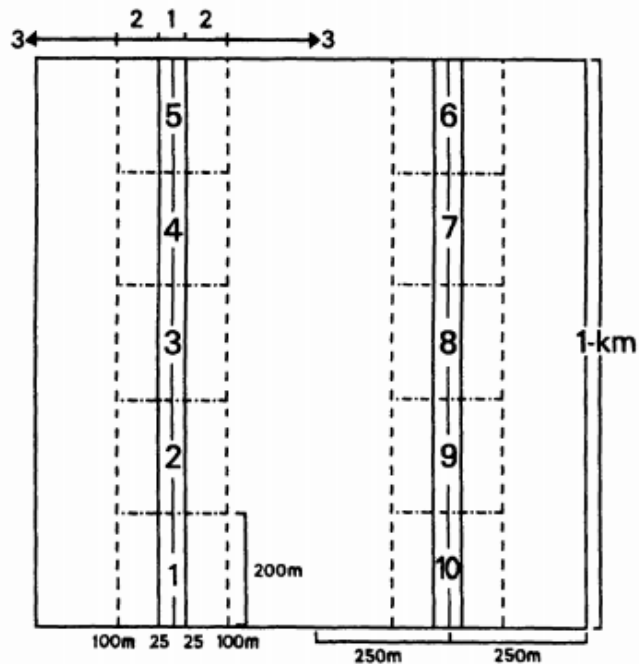


Fot. Marcin Karbala



Data collection – timed visits

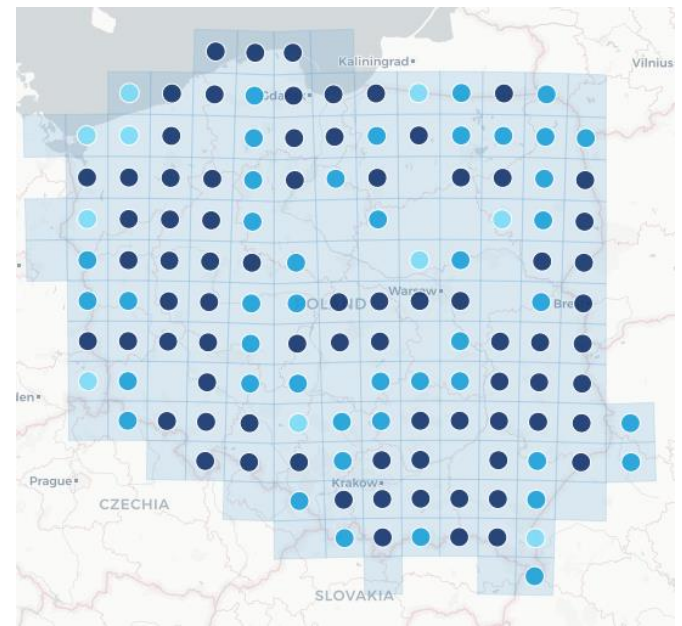
- Common Breeding Bird Survey
- 1x1 km squares
- two 1-km transect counts



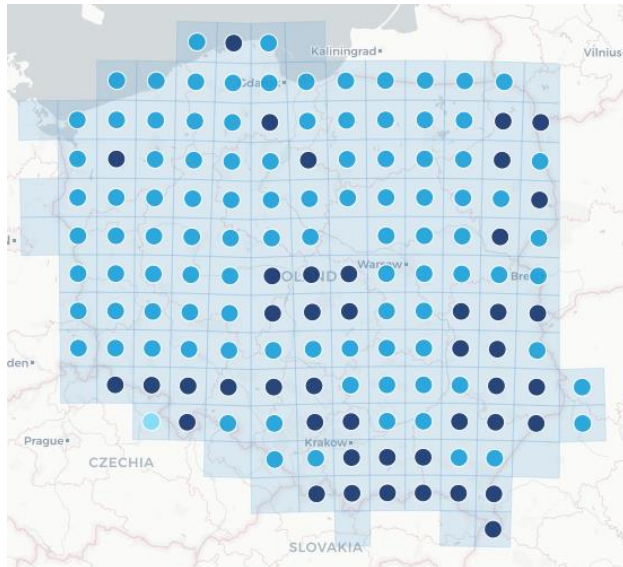
Results:

- in general
OK...

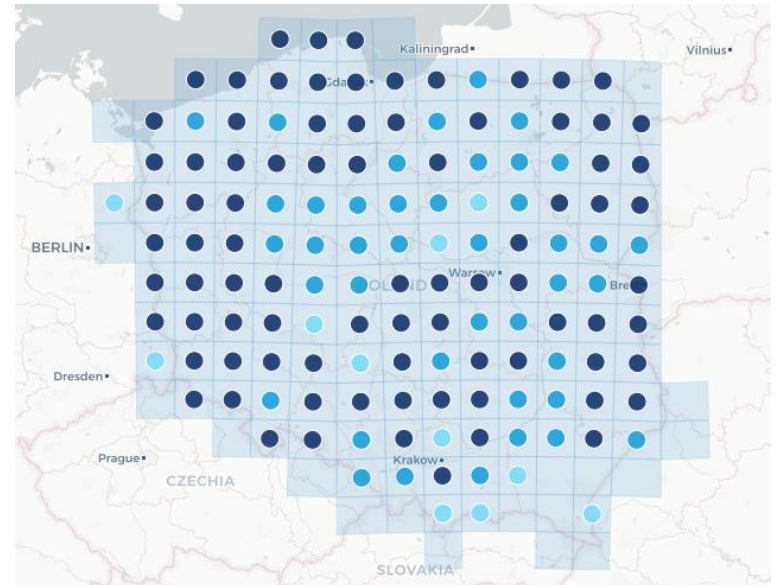
Strix aluco



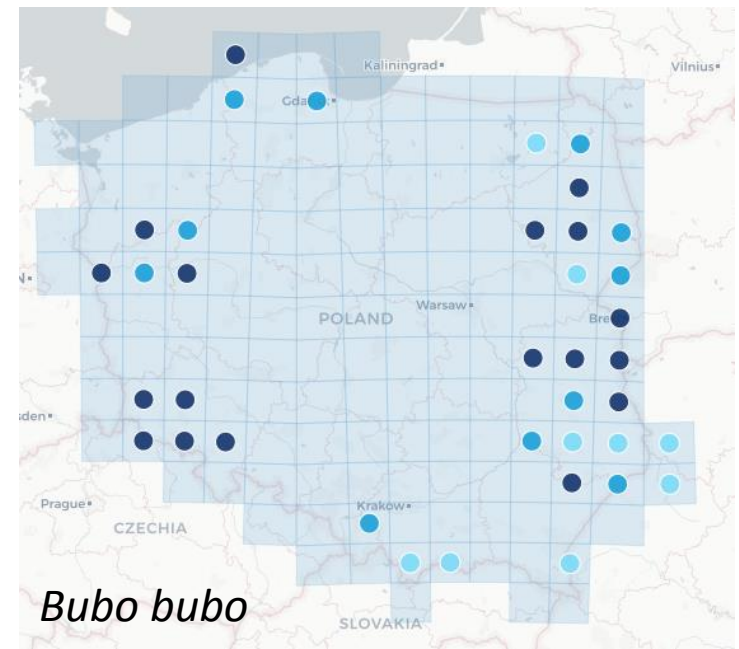
Anthus trivialis



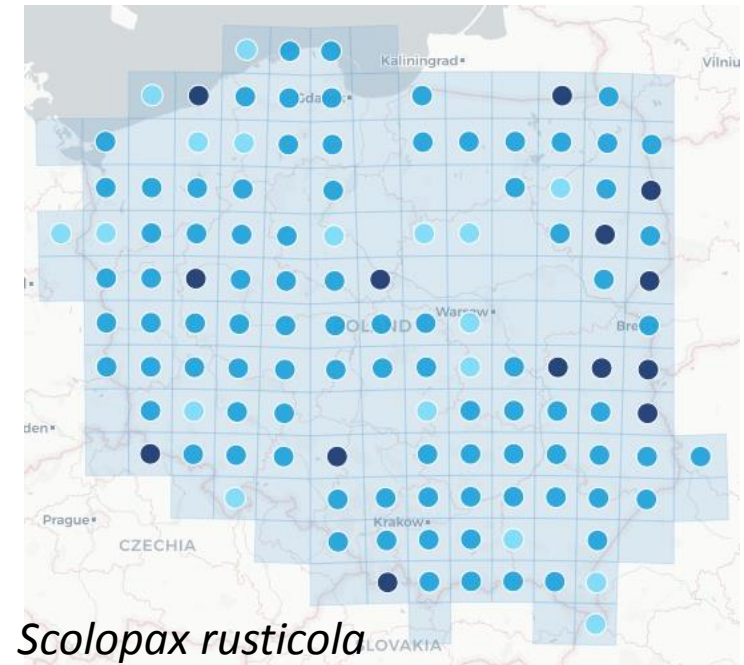
Grus grus



some gaps
present, but
not many...



quality of
abundance
data? – we will
see in January



Challenges / problems

- not much happened in the first period of EBBA project – better quality data could be collected
- human factor = 1 region does not want to cooperate [but solved]

Challenges / problems

- some „virtual” data (rare species) coming from regional coordinators = not linked to specific records in database → ask for details in „comments” column
- abundance data = room for subjectivizm

Challenges / problems

- expert assessment in breeding code – upgrading is risky! so far not used in Poland
 - not a real scientific approach
 - devaluation of „confirmed breeding”
 - losing additional info on the fieldwork effort
 - where to put the boundary

