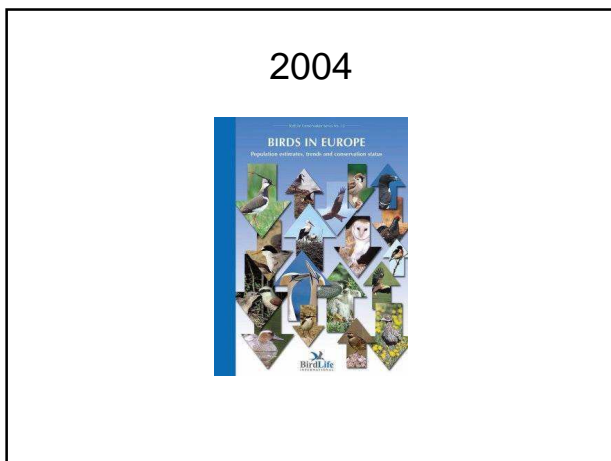
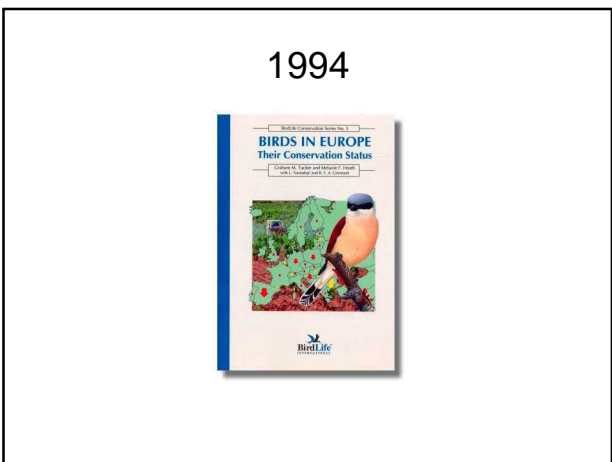




- Swedish Species Information Centre**
- Independent governmental organisation connected to the Swedish University of Agricultural Sciences
 - Scientific advisors in matters concerning biodiversity
 - Swedish Red List authority

Landings per unit of fishing power (LPUP)

Species	Period 1	LPUP	Period 2	LPUP	Decrease %
Haddock	1889-1893	20,72	2003-2007	0,19	99,1
Plaice	1889-1893	8,18	2003-2007	0,23	97,2
Cod	1889-1893	4,27	2003-2007	0,58	86,6
Hake	1891-1895	1,63	2003-2007	0,07	95,2
Skates & rays	1902-1906	1,34	2003-2007	0,22	83,4
Ling	1889-1893	1,17	2003-2007	0,05	95,7
Halibut	1890-1894	1,03	2002-2006	0,00	99,8
Turbot	1903-1907	0,21	2003-2007	0,03	84,8
Brill	1890-1894	0,20	2003-2007	0,03	85,7
Conger eel	1902-1906	0,20	2002-2006	0,02	89,2
Wolffish	1903-1907	0,19	2001-2005	0,01	95,8



October 2004

Swedish Ornithological Society

Happy news are that many species have increased in numbers during the last ten years.

However, the number of decreasing species is three times as large.

Formerly common species as snipe and lapwing are not as widespread anymore.

How was the data evaluated?

I do not know!

Assignment to Lund University

- Collate data for all breeding species
- Calculate trends for the last 30-year period
- Evaluate causes
- Lack of knowledge

Expert panel

- Lund University (3)
- Swedish University of Agricultural Sciences (2)
- Swedish Species Information Centre (1)
- Kristianstad University (1)
- Swedish Hunters Organisation (1)
- Swedish Ornithological Society (1)

Population size

Birds of Sweden – their numbers and distribution
 Ottosson *et al.* 2012.

Estimates of population sizes for all breeding bird species 1997–2008

Släk	Artd	Nr	Utvveck	Kolor
SD	10000	71	21000-10000	● 1
AC	11000	12	10000-1000	● 1.1
T	2500	4	3000-4000	● 1.2
F	3000	1	2000-200	● 1.3
H	150	1	200-200	● 1.4
W	500	0	100-300	● 1.5
S	500	0	100-200	● 1.6
C	0	0	0	● 1.7
U	0	0	0	● 1.8
AB	0	0	0	● 1.9
U	0	0	0	● 2.0
D	0	0	0	● 2.1
L	0	0	0	● 2.2
U	0	0	0	● 2.3
P	0	0	0	● 2.4
M	0	0	0	● 2.5
M	0	0	0	● 2.6
M	0	0	0	● 2.7
M	0	0	0	● 2.8
M	0	0	0	● 2.9
M	0	0	0	● 3.0
M	0	0	0	● 3.1
M	0	0	0	● 3.2
M	0	0	0	● 3.3
M	0	0	0	● 3.4
M	0	0	0	● 3.5
M	0	0	0	● 3.6
M	0	0	0	● 3.7
M	0	0	0	● 3.8
M	0	0	0	● 3.9
M	0	0	0	● 4.0
M	0	0	0	● 4.1
M	0	0	0	● 4.2
M	0	0	0	● 4.3
M	0	0	0	● 4.4
M	0	0	0	● 4.5
M	0	0	0	● 4.6
M	0	0	0	● 4.7
M	0	0	0	● 4.8
M	0	0	0	● 4.9
M	0	0	0	● 5.0
M	0	0	0	● 5.1
M	0	0	0	● 5.2
M	0	0	0	● 5.3
M	0	0	0	● 5.4
M	0	0	0	● 5.5
M	0	0	0	● 5.6
M	0	0	0	● 5.7
M	0	0	0	● 5.8
M	0	0	0	● 5.9
M	0	0	0	● 6.0
M	0	0	0	● 6.1
M	0	0	0	● 6.2
M	0	0	0	● 6.3
M	0	0	0	● 6.4
M	0	0	0	● 6.5
M	0	0	0	● 6.6
M	0	0	0	● 6.7
M	0	0	0	● 6.8
M	0	0	0	● 6.9
M	0	0	0	● 7.0
M	0	0	0	● 7.1
M	0	0	0	● 7.2
M	0	0	0	● 7.3
M	0	0	0	● 7.4
M	0	0	0	● 7.5
M	0	0	0	● 7.6
M	0	0	0	● 7.7
M	0	0	0	● 7.8
M	0	0	0	● 7.9
M	0	0	0	● 8.0
M	0	0	0	● 8.1
M	0	0	0	● 8.2
M	0	0	0	● 8.3
M	0	0	0	● 8.4
M	0	0	0	● 8.5
M	0	0	0	● 8.6
M	0	0	0	● 8.7
M	0	0	0	● 8.8
M	0	0	0	● 8.9
M	0	0	0	● 9.0
M	0	0	0	● 9.1
M	0	0	0	● 9.2
M	0	0	0	● 9.3
M	0	0	0	● 9.4
M	0	0	0	● 9.5
M	0	0	0	● 9.6
M	0	0	0	● 9.7
M	0	0	0	● 9.8
M	0	0	0	● 9.9
M	0	0	0	● 10.0

255 breeding species

- Grand total 69,000,000 bp
- Willow warbler 13,300,000 bp
- Chaffinch 8,350,000 bp

Population trends for Swedish Breeding Birds (2007)

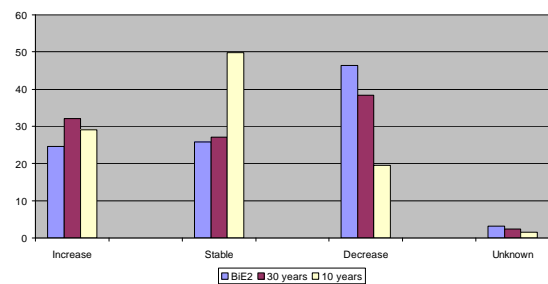


Knowledge need to be improved

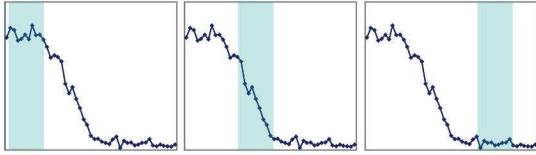
Conclusions

- Reporting panel
- Audit trail
- Clear rules for interpretation
- Time frame
- Cooperation for best result

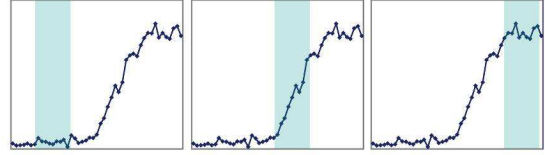
Was it wrong?



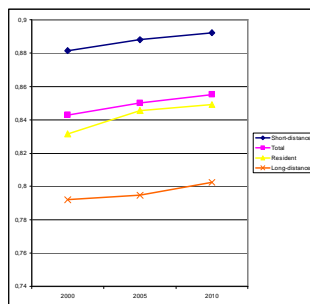
Assessment window



Assessment window



RLI Birds 2000-2010



The future

Major financiers



Swedish Environmental Protection Agency

Major actors

Swedish
Bird
Survey

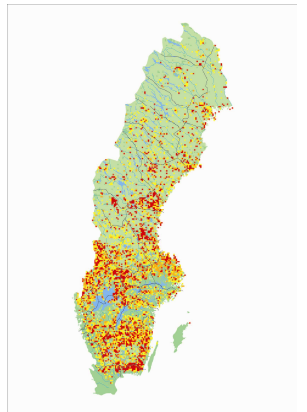
Common birds



Uncommon
and rare birds

Swedish Breeding Bird Atlas

Capercaillie
1974 – 1984



Capercaillie *Tetrao urogallus*

