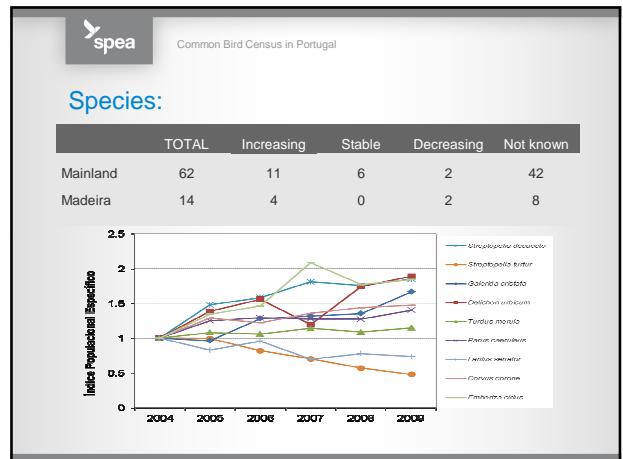
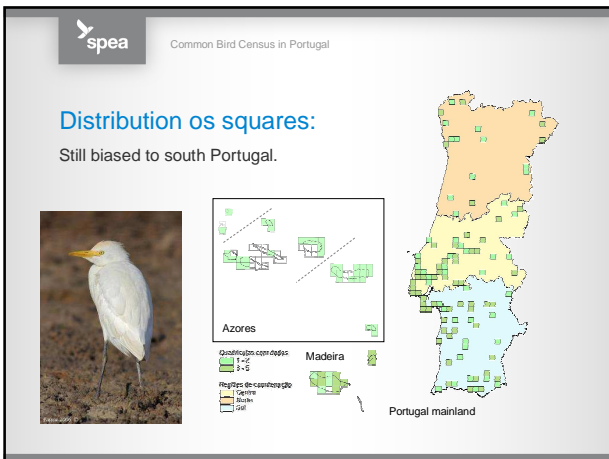
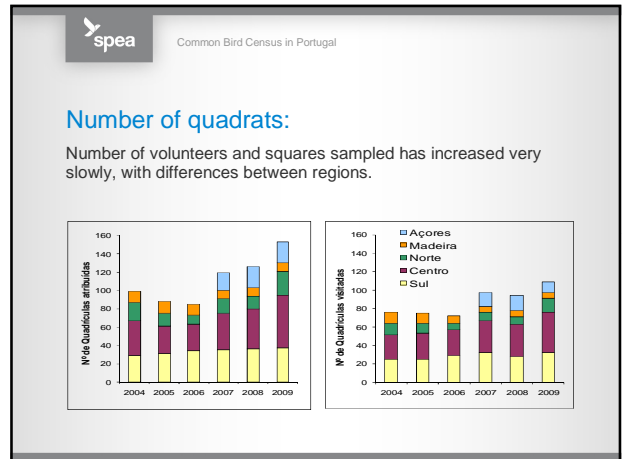
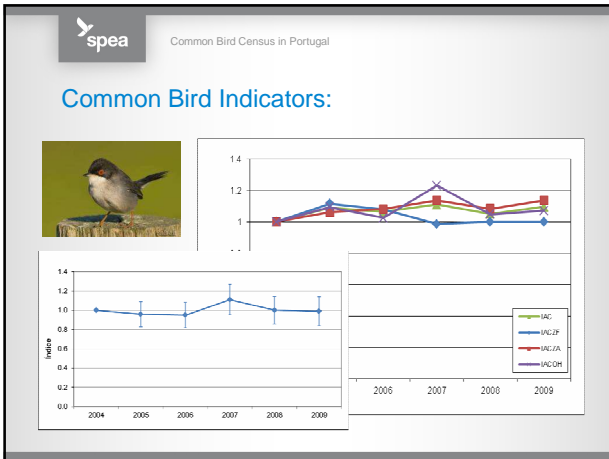


Common Bird Census in Portugal

CBC in Portugal:

- Started in 2004;
- To calculate trends of breeding bird species;
- To produce aggregated indexes;
- Data collection in more than 100 grid squares;
- Takes place in Portuguese mainland, Madeira and Azores archipelagos;





spea Common Bird Census in Portugal

Data used for:

- **Nationally:** INE, GPP, ICNB, and APA.
- **Internationally:** BirdLife International, IUCN, EuroStat, OECD, PECBMS.
- National campaigns.

spea Common Bird Census in Portugal

Problems

- Low participation and low quality of volunteers (promoting birding, training);
- Some turnover of volunteers (more feedback/reporting, turning participation easier);
- Lack of regular funding;
- Confusion related with different national common bird indicators;

Obrigado!

Mikulov, 7th February 2012 | domingos.leitao@spea.pt | ana.meirinho@spea.pt

www.spea.pt

facebook | [twitter](https://twitter.com/spea_birdlife) | www.facebook.com/spea.Birdlife | twitter.com/spea_birdlife